

TUNNEL TEMPERATURE AND HOTSPOT MONITORING



DETECT TEMPERATURE
CHANGES OF JUST

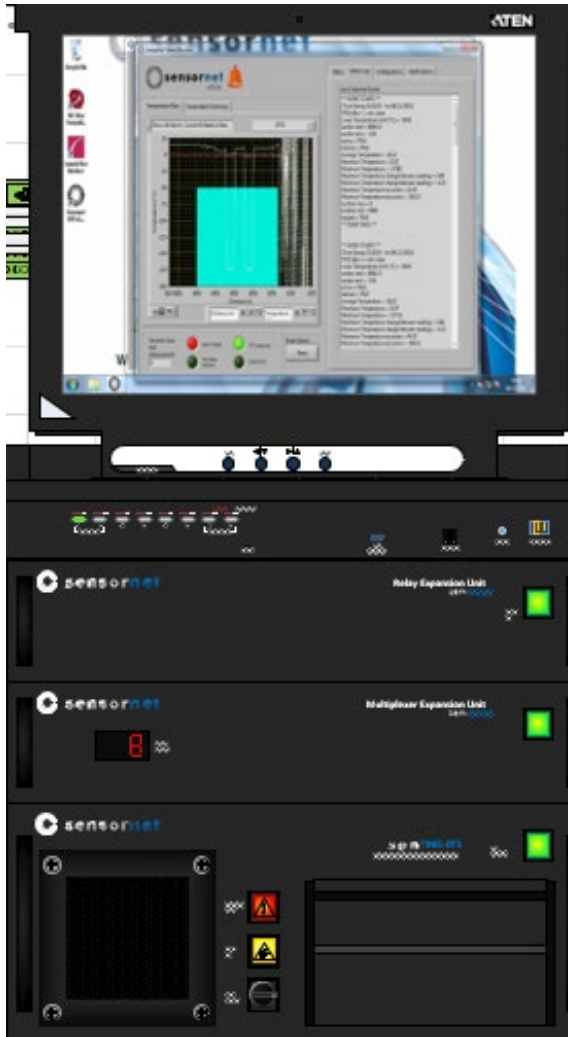
0.01°
CELSIUS

RECORD
TEMPERATURE
DATA EVERY **1**
METER

RESPOND
DYNAMICALLY IN
EMERGENCY
RATING SITUATIONS
WITH UPDATE
INTERVALS OF **10**
SECONDS

FULL COVERAGE OF LONG
DISTANCE ASSETS WITH
CONTINUOUS
MONITORING
FOR UP TO **45**
KILOMETERS

FIBRE OPTIC DISTRIBUTED TEMPERATURE SENSORS
FOR MONITORING POWER TUNNELS, RAILWAY
TUNNELS AND MINE CORRIDORS



Physical dimensions*

Height: 213cm
Width: 82cm
Depth: 84cm
Weight: 310kg

*standard 19" cabinet, dimensions subject to change

Multiple channels

4, 8 and 16 channel multiplexer modules available to increase system flexibility.

Communication options

Alarms Functionality: User configurable zones and alarms available to tie in to SCADA. MODBUS/OPC/WITSML data formats. Relay contact module also available

Operating environment

Operating Temp.: +5°C to +40°C
Storage Temp.: -15°C to +65°C
Humidity: 5% to 95% relative humidity, non-condensing

Power requirement

AC Power: 100V – 240V, 50Hz – 60Hz
Power consumption: 900W maximum

BE SURE WITH SENSORNET

SensorNet offers the widest range of DTS systems to meet your every monitoring requirement, specific to any need, environment and challenge. Rely on us to provide the full solution - from system engineering and design, to installation, data interpretation services and global support services. We'll take the time to fully understand your business goals and the unique context and physical arrangement of your asset to provide the best solution to you.

